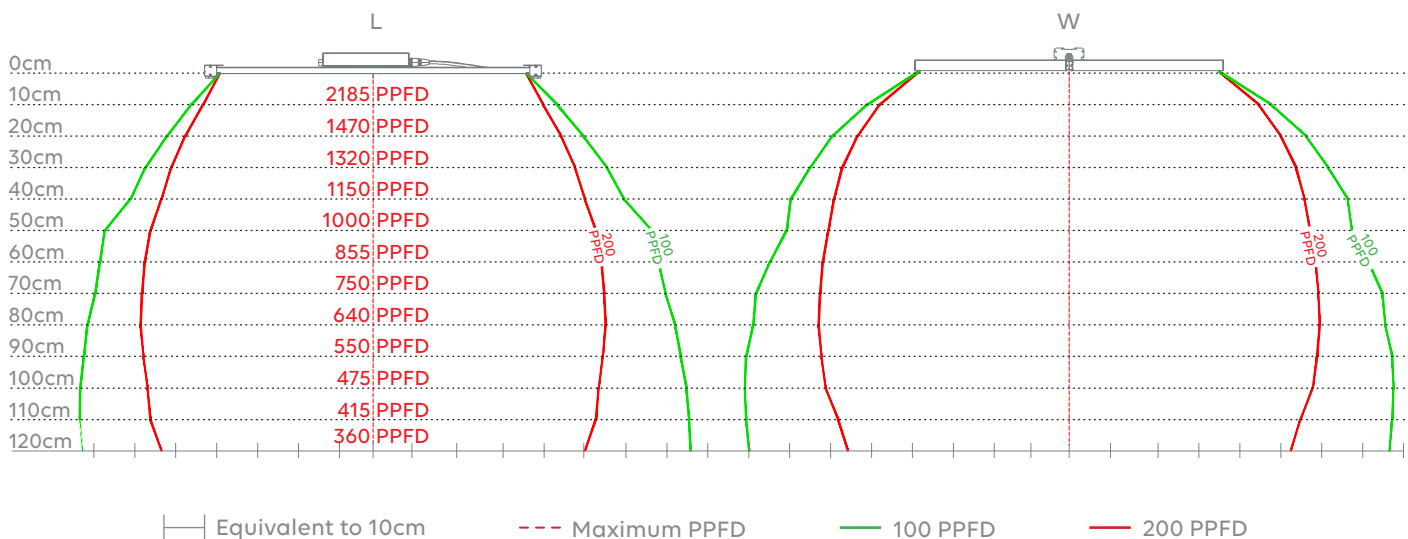




COVERAGE AREA REPORT LUCIUS 680W FLEX R

MAX PPFD ($\mu\text{mol/s/m}^2$)	1 HANGING HEIGHT (cm)	2 FLOWER COVERAGE		2 VEG COVERAGE	
		L x W (cm)	AREA (m ²)	L x W (cm)	AREA (m ²)
2185	10	1.22 x 1.36	1.66	1.32 x 1.45	1.91
1470	20	1.35 x 1.52	2.05	1.51 x 1.70	2.56
1320	30	1.45 x 1.63	2.36	1.68 x 1.86	3.12
1150	40	1.52 x 1.69	2.57	1.80 x 2.00	3.60
1000	50	1.60 x 1.73	2.76	2.00 x 2.03	4.06
855	60	1.64 x 1.77	2.90	2.05 x 2.15	4.41
750	70	1.66 x 1.79	2.97	2.10 x 2.25	4.73
640	80	1.67 x 1.80	3.00	2.17 x 2.27	4.93
550	90	1.65 x 1.78	2.94	2.21 x 2.32	5.13
475	100	1.62 x 1.75	2.83	2.25 x 2.33	5.25
415	110	1.60 x 1.66	2.65	2.27 x 2.32	5.27
360	120	1.52 x 1.59	2.42	2.28 x 2.30	5.24

PPFD COVERAGE AREA



¹ **Hanging Height** refers to the distance between the plant canopy and the LED.

² **Coverage Area** refers to the region that the plants receive at minimum **200**PPFD for **Flowering** and **100**PPFD for **Vegetative**.

COVERAGE AREA TEST

LUCIUS 680W FLEX R

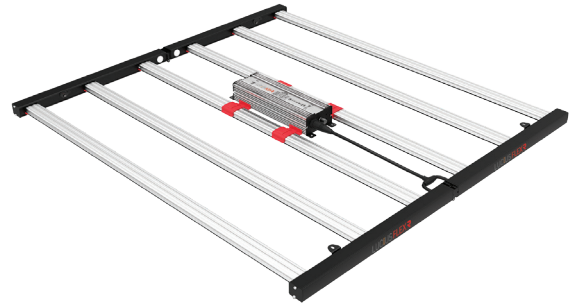
HIGH FLOWERING

¹Hanging Height: 38cm

Max PPFD: 1200 μ mol/s/m²

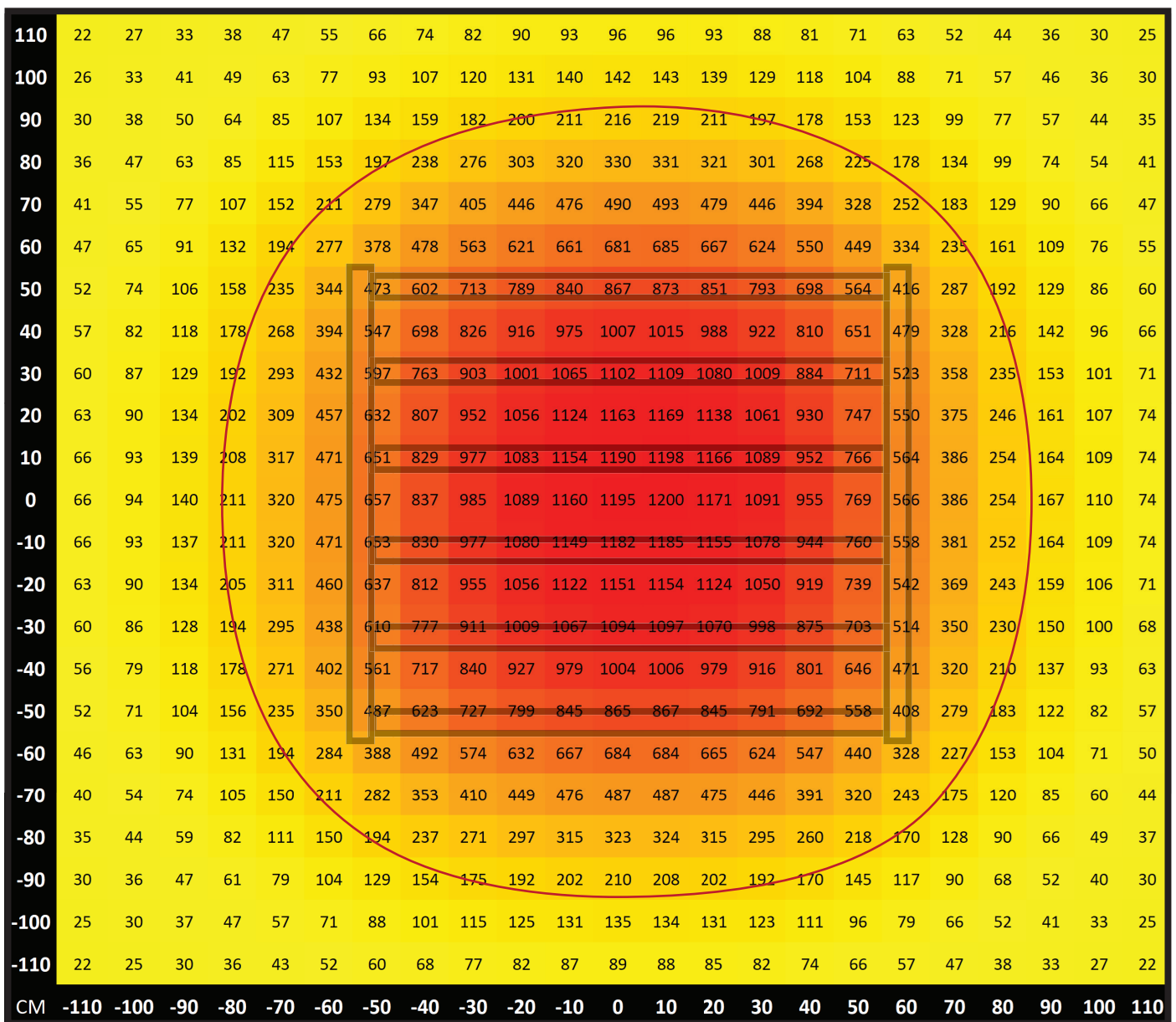
Coverage Dimensions L x W: 1.50 x 1.67m

²Coverage Area: 2.50m²



Fixture outline **Red** — Max Coverage Area @Minimum PPFD **200** μ mol/s/m²

The PPFD map test is conducted on a 2.2 x 2.2m plane with 529 points in a dark room without reflective walls, floor or ceiling.



¹ Hanging Height refers to the distance between the plant canopy and the LED.

² Coverage Area refers to the region that the plants receive at minimum 200PPFD for Flowering and 100PPFD for Vegetative.



COVERAGE AREA TEST

LUCIUS 680W FLEX R

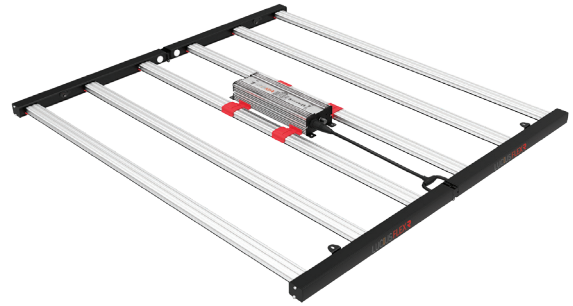
FLOWERING

¹Hanging Height: 50cm

Max PPFD: 1000µmol/s/m²

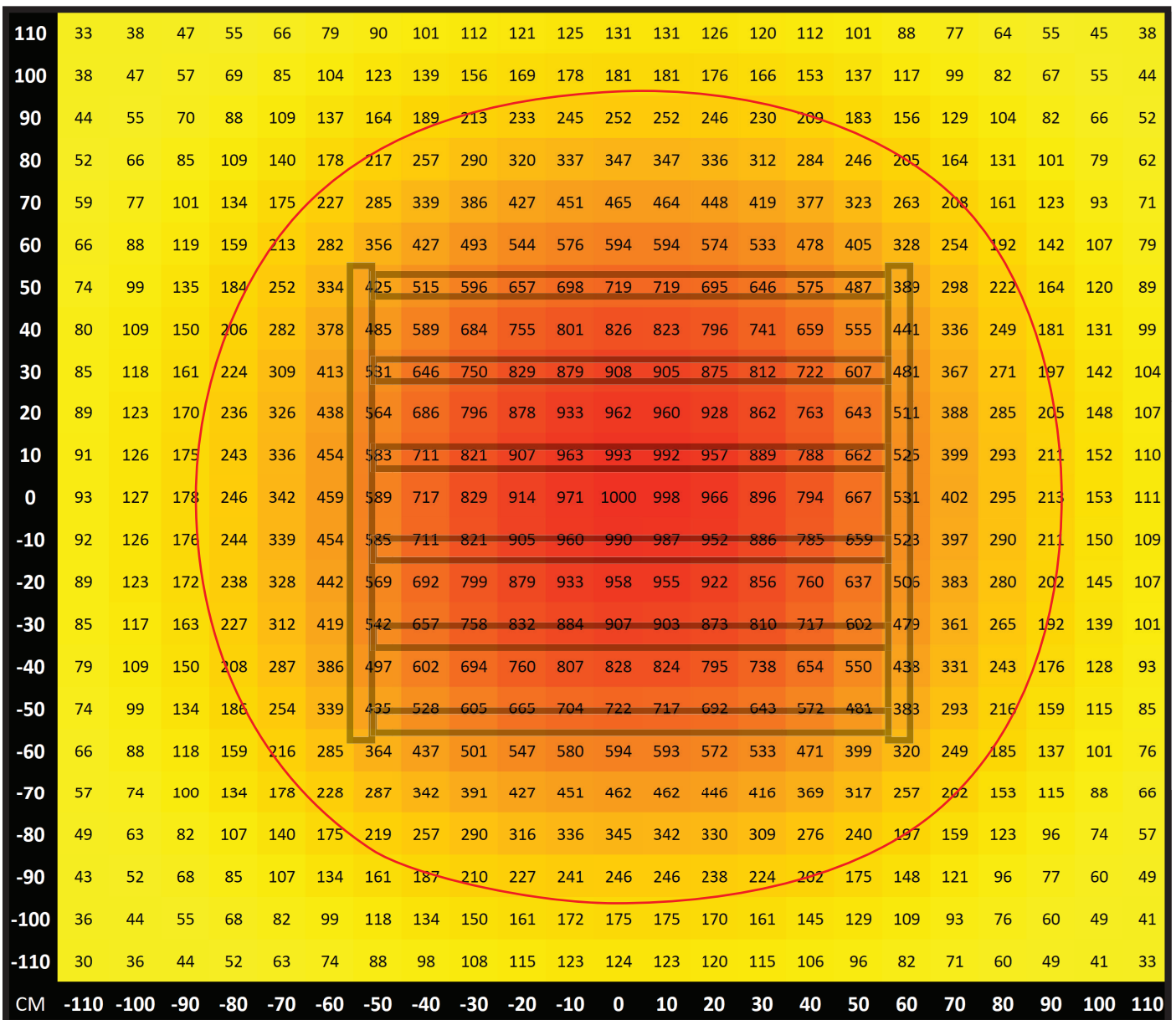
Coverage Dimensions L x W: 1.6 x 1.73m

²Coverage Area: 2.76m²



Fixture outline **Red** — Max Coverage Area @Minimum PPFD **200**µmol/s/m²

The PPFD map test is conducted on a 2.2 x 2.2m plane with 529 points in a dark room without reflective walls, floor or ceiling.



¹ Hanging Height refers to the distance between the plant canopy and the LED.

² Coverage Area refers to the region that the plants receive at minimum 200PPFD for Flowering and 100PPFD for Vegetative.



COVERAGE AREA TEST

LUCIUS 680W FLEX R

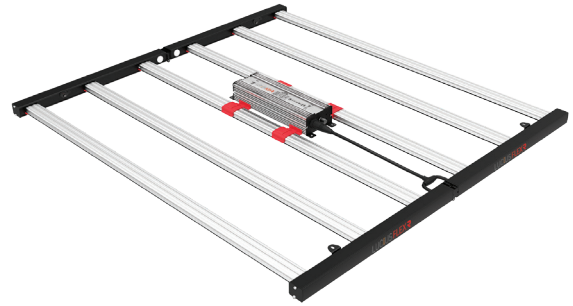
VEGETATIVE

¹Hanging Height: 96cm

Max PPFD: 500µmol/s/m²

Coverage Dimensions L x W: 2.23 x 2.32m

²Coverage Area: 5.17m²



Fixture outline — Max Coverage Area @Minimum PPFD **100**µmol/s/m²

The PPFD map test is conducted on a 2.2 x 2.2m plane with 529 points in a dark room without reflective walls, floor or ceiling.

110	68	77	88	99	109	120	132	142	153	159	164	167	167	164	159	150	141	130	118	107	96	85	76
100	77	88	99	112	126	142	156	167	181	189	194	197	198	194	186	178	167	153	137	124	109	96	85
90	85	99	112	129	146	164	181	197	211	222	230	233	233	230	219	208	194	178	159	142	126	109	96
80	93	109	126	145	167	187	208	227	246	259	268	273	274	268	257	241	224	202	181	161	140	123	107
70	104	120	142	163	189	213	238	260	282	298	309	314	315	306	293	276	254	230	205	181	156	134	116
60	112	132	156	181	208	238	265	293	317	336	348	356	356	347	331	312	287	257	230	200	172	148	126
50	120	142	170	197	230	262	293	324	353	372	387	394	394	386	369	345	316	285	251	219	189	159	135
40	129	153	181	213	247	283	319	353	383	407	422	430	429	421	401	375	342	306	271	235	200	169	142
30	134	161	192	224	263	301	339	376	410	435	451	460	460	449	427	399	364	326	287	249	211	178	150
20	140	167	198	235	274	315	356	394	429	455	473	481	481	471	449	419	380	340	298	257	219	185	156
10	142	170	202	241	281	323	364	405	440	468	487	495	495	481	460	429	391	350	306	263	224	189	159
0	145	172	205	242	282	326	369	408	443	473	492	501	498	487	462	432	394	352	306	265	224	189	159
-10	142	170	205	241	282	323	367	405	440	468	487	495	495	481	460	427	388	347	304	263	224	187	156
-20	141	167	200	235	274	315	357	395	429	457	473	481	481	468	446	416	378	338	295	254	219	183	153
-30	137	161	192	227	264	304	342	378	410	435	454	460	459	446	427	397	361	323	283	244	210	175	148
-40	131	153	183	214	249	285	323	356	386	408	424	432	429	419	399	372	339	304	265	230	197	167	140
-50	123	145	172	200	233	265	298	328	356	375	391	397	394	383	367	342	312	279	246	213	183	156	131
-60	115	134	159	183	213	241	271	298	320	339	353	357	356	345	331	309	282	254	224	194	169	142	120
-70	105	123	144	167	192	216	241	265	285	298	311	315	312	306	293	274	252	227	200	175	153	131	110
-80	96	110	129	148	170	189	211	230	246	260	270	271	271	265	254	238	219	197	178	154	137	117	100
-90	87	99	115	131	148	164	183	197	211	222	230	233	230	225	216	204	189	172	153	137	120	104	90
-100	77	88	101	115	129	142	156	169	180	187	194	197	194	191	183	172	161	148	131	118	104	90	79
-110	68	77	88	99	109	120	132	142	150	156	161	164	164	159	153	145	136	126	113	101	90	79	71
CM	-110	-100	-90	-80	-70	-60	-50	-40	-30	-20	-10	0	10	20	30	40	50	60	70	80	90	100	110

¹ Hanging Height refers to the distance between the plant canopy and the LED.

² Coverage Area refers to the region that the plants receive at minimum **200**PPFD for Flowering and **100**PPFD for Vegetative.

